

PRODUCT DATA SHEET

AttackPRO+ Thermal Imaging Camera NFPA 1801:2021 Certified

Designed with firefighters for firefighters, the NFPA Certified AttackPRO+ thermal imaging camera offers an unmatched combination of image quality, durability, and price. With its high resolution and wide field of view, AttackPRO+ is the new decision-making weapon of choice for captains and commanding officers. Mixed-gain pixel technology eliminates the visual confusion and delay of switching between high-gain and low-gain modes. AttackPRO+ lets you clearly see the fire and the crew, all in one detailed image.

The kit includes the AttackPRO+ camera, 2 batteries, and a charging dock.

Designed and Manufactured in the USA with Global Components. Thermal sensor designed and manufactured by Seek in Santa Barbara, CA USA

| | |
|---------------|---------------------------------|
| Resolutions | 320 x 240 |
| Field of View | 57° x 42° |
| Durability | IP67 waterproof, 2 meter drop |
| Detection | -20°C to 550°C (-4°F to 1022°F) |
| Imaging | Mixed Gain with SV1 |
| Flashlight | 300 Lumen LED |

KEY FEATURES

- **Mixed Gain with SV1 Image Optimization**

See the hottest and coolest regions of the scene simultaneously without freezing or switching gain modes; details enhanced with SV1

- **Durable, Waterproof Design**

Durable and reliable design built with IP67 rating and 2 meter drop resistance

- **Wide, 57-Degree Field of View**

Easily scan a large area to identify hazards or victims in seconds

- **Long-Lasting Rechargeable Battery**

Greater than 6 hours of continuous thermal imaging

- **Simple Operation. Purpose-Built for the Fire Ground**

One button thermal operation, no confusing menus or settings, Get the job done efficiently and consistently

BENEFITS

- **Decision Making on Command**

Direct Firefighters, water, and resources with expedited tactical precision

- **Robust Personal TIC**

Equip the entire department with the first affordable decision making TIC

- **See Through Smoke. Flashlight Optional.**

300 lumen LED flashlight available at the touch of a button

- **Search and Rescue**

Find victims and self-rescue faster with a reliable personal TIC

- **Execute 360 Size-ups & Overhaul Faster**

When seconds count, a Seek decision-making TIC saves time and lives



TECHNICAL SUMMARY

| SPECIFICATIONS | DESCRIPTION |
|---------------------|--|
| Thermal Sensor | 320 x 240 (76,800 pixels) |
| Detection Distance | 12 inches to 1,000 feet |
| Field of View | 57° HFOV, 42° VFOV |
| Temperature Range | -4 to 1,022°F (-20 to 550°C) |
| Operating Temp | -4 to 131°F (-20 to 55°C) - no time limit up to 302°F (150°C) - max 15 min up to 500°F (260°C) - max 5 min |
| Frame Rate | > 25 Hz Fast Frame |
| IP Rating | IP67 Waterproof |
| Flashlight | 300 Lumen LED |
| Display | 3.5" Color with Corning® Gorilla® Glass |
| Thermal Sensitivity | < 35 mK with SV1 |
| User Interface | On device 2 tactile button operation |
| Temp. Display Scale | Fahrenheit or Celsius |
| Image modes | 2 Options (TIBASIC-default, and TIBASIC+) |
| Storage Media | NA |
| Battery | >6 Hours Thermal Imaging (w/o flashlight); >3hrs (with thermal AND flashlight) |

300 LUMEN LED LIGHT



Seek AttackPRO+ combines powerful thermal imaging insight and a bright LED flashlight in an intuitive, two button interface

USER INTERFACE

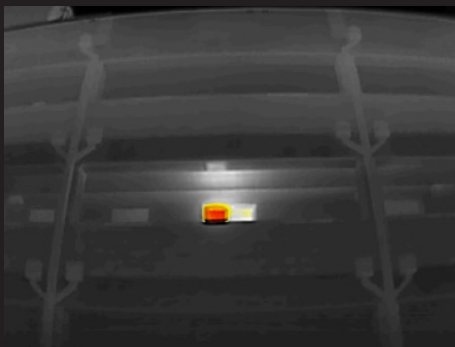


Ti BASIC
Maintain your situational awareness with a simple and decluttered display showing greyscale and colored regions



Ti BASIC +
Enhance your tactics with a spot temp readout while still maintaining greyscale and colored regions

THERMAL APPLICATIONS



360 SIZE UP



FIRE ATTACK



OVERHAUL



DESKTOP BATTERY CHARGER



TECHNICAL SUMMARY

| SPECIFICATIONS | DESCRIPTION |
|---------------------|--|
| AC INPUT | 100-240 VAC 50/60 HZ, 0.5 A |
| SUPPLY VOLTAGE | 5VDC |
| POWER RATING | 10W |
| ENVIRONMENTAL | INTENDED FOR INDOOR USE |
| INCLUDED IN THE BOX | DESKTOP CHARGER CRADLE POWER SUPPLY INCLUDING AC PLUGS FOR US, EU, UK |

BATTERY Li-ion



TECHNICAL SUMMARY

| SPECIFICATIONS | DESCRIPTION |
|-----------------------------|---|
| BATTERY MATERIAL | LITHIUM ION |
| NOMINAL VOLTAGE | 3.63 V |
| NOMINAL CAPACITY | 4900 mAh |
| OPERATING TEMPERATURE RANGE | DURING DISCHARGE: -20°C TO 60°C DURING CHARGING: 0°C TO 45°C |
| WEIGHT | 115g |
| SIZE | 170 X 45 X 43 mm |
| COMPATIBLE WITH | FQ-PPAX FQ-PPNX |